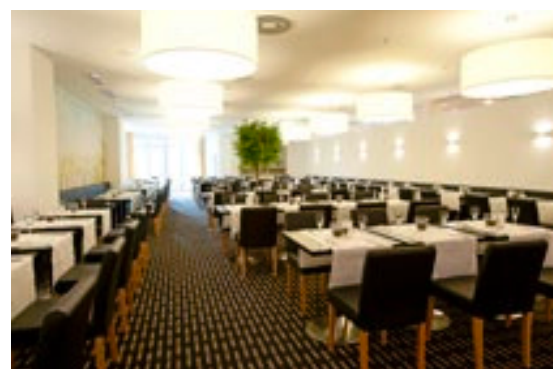
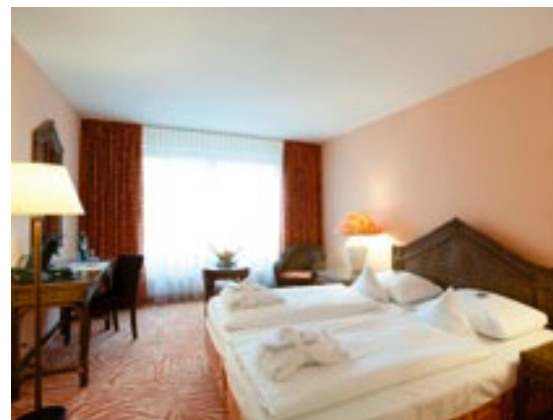
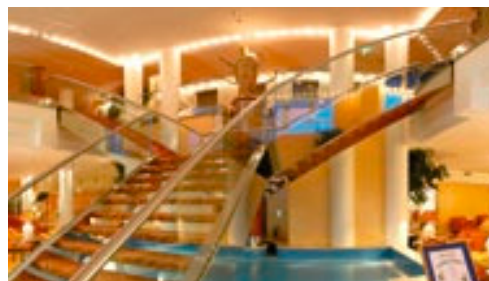


Frankfurt/Main



relexa hotel Frankfurt/Main

Lurgiallee 2
60439 Frankfurt
Telephone +49 (0) 69 | 957 78 – 0
Telefax +49 (0) 69 | 957 78 – 878
Frankfurt-Main@relexa-hotel.de
www.relexa-hotel-frankfurt.de/en



The comfortable business hotel in the city on the river Main

Whether you are visiting for a meeting, a trade fair or to negotiate with business partners: relexa hotel Frankfurt/Main is happy to contribute to the success of your business trip. The relexa hotel is centrally located between the city of Frankfurt/Main and the town of Bad Homburg, making it an ideal meeting place and base for activities in Frankfurt and the surrounding area.

Accommodation

- 163 comfort rooms, business rooms with bathtub or shower, pay-TV and mini bar
- Business rooms are with fax and ISDN connections, W-LAN
- Non-smoking and smoking rooms
- Underground parking

Dining

- Restaurants »Boulevard«, »Bistro« and »La Fenêtre«
- Bar »Happy Hour«
- Outdoor terrace, beer garden

Leisure

- Sauna, steam bath, solarium, fitness room

Meetings and events

- 15 meeting and event rooms for up to 330 people



Direct routes

You can reach the relexa hotel Frankfurt/Main easily via the A661, exit Heddernheim. From Marie-Curie-Strasse turn left after about 600 m into Lurgiallee.

The A661, Offenhacher Kreuz in the southeast, connects the A3 (Cologne – Munich) with the A5 (Basle – Kassel) at the Bad Homburger Kreuz.

Travelling from the south (Basle/Karlsruhe), exit at the Nordwestkreuz on to the A66/ Miquelallee direction Frankfurt/ Miquelallee and then leave the motorway at the TV tower (Fernsehturm) direction Ginnheim. Follow the 4-lane Rosa-Luxemburg-Strasse direction Bad Homburg. Then exit at Mertonviertel. This takes you to Marie-Curie-Strasse, where you turn right at the first set of traffic lights. Coming from the west (Wiesbaden/ Rheingau) and the Rhineland (Cologne/Bonn) take the A66 at Wiesbadener Kreuz direction Frankfurt and exit only when you reach the TV tower (Fernsehturm) direction Ginnheim.

Frankfurt/Main Airport (FRA): 24 km

Main railway station Frankfurt/Main: 9 km

Frankfurt city centre: 9 km

Trade fair Frankfurt/Main: 8 km

Bad Homburg Centre: 8 km

Bad Homburg Casino: 9 km

Motorways: A66: 6 km, A661: 0.6 km

www.relexa-hotels.de/en



Meeting and event equipment

Standard meeting and event equipment

- Beamer
- Flip chart including paper and pens
- Screen
- Overhead projector
- Pin board
- Writing pads and pens
- W-LAN
- Text/magnet board
- Electricity connection voltage current 220 V
- Telefax machine
- Telephone and fax machine
- TV/colour screen with remote control and 70 cm screen
- DVD player
- Video camera

Extras

- Sound system
- CD player
- Image/slide projector
- Various microphones, some on special request
- Transparent foil copies
- Photocopies
- Copier on request
- Laser pointer
- LCD display
- Presentation case
- Plasma screen
- Podium
- High voltage current 380 V in rooms Berlin 1 – 3
- ISDN connection
- Internet
- Rooms Berlin 1 – 3 directly accessible by car
- Dance floor (mobile)
- Business centre
- Separate entrance to the meeting and event area

Service (on request)

- Interpreter service
- Secretarial service
- IT technician



Frankfurt 2

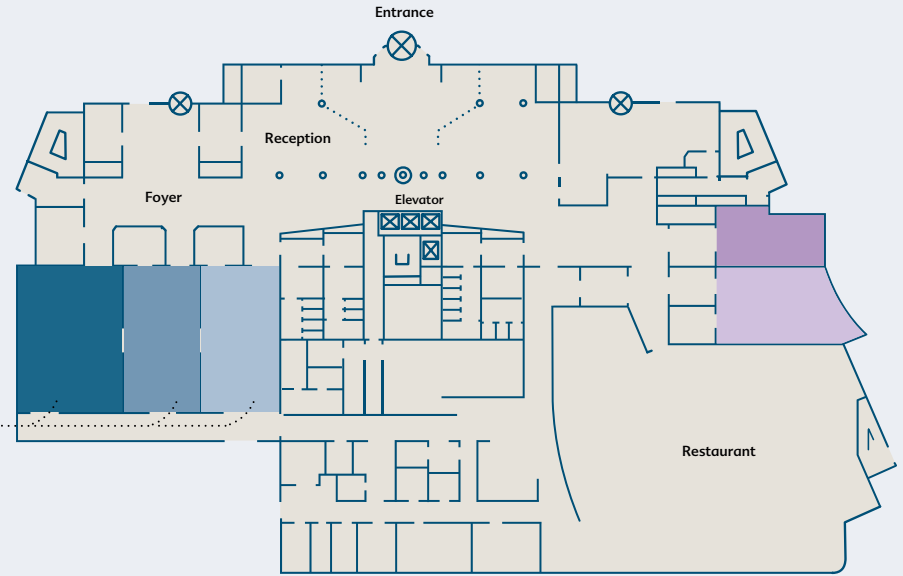


Penthouse 1

Meeting and event rooms

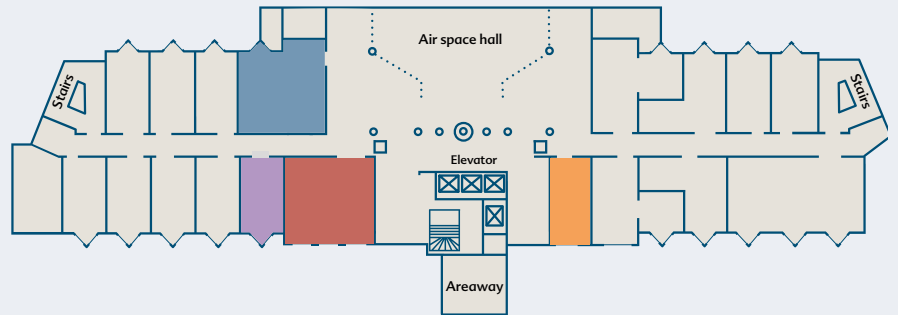
On the ground floor

- Berlin 1
- Berlin 2
- Berlin 3
- Frankfurt 1
- Frankfurt 2



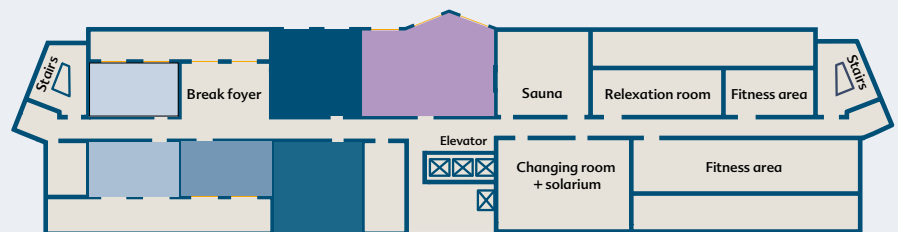
On the 1st floor

- Stuttgart
- Bad Steben
- Ratingen
- Bad Salzdetfurth



On the penthouse

- Penthouse 1
- Penthouse 2
- Penthouse 3
- Penthouse 4
- Penthouse 5
- Hamburg



Room name	Berlin 1	Berlin 2	Berlin 3	Berlin 1+2	Berlin 2+3	Berlin 1-3	Frankfurt 1	Frankfurt 2
Location	Ground floor	Ground floor	Ground floor	Ground floor	Ground floor	Ground floor	Ground floor	Ground floor
L x W [m]	9,0 x 13,1	7,4 x 13,1	7,3 x 13,1	16,4 x 13,1	14,7 x 13,1	23,7 x 13,1	13,7 x 5,1	13,7 x 6,4
Size [m ²]	117,9	96,9	95,2	214,8	192,5	310,5	70,6	87,4
Height [m]	3,25	3,25	3,25	3,25	3,25	3,25	2,9	2,9
Doors [m]	1,85 x 2,2	1,85 x 2,2	1,85 x 2,2	1,85 x 2,2	1,85 x 2,2	1,85 x 2,2	1,90 x 2,1	1,90 x 2,1
	0,85 x 2,2	2,25 x 2,2	2,30 x 2,2	2,25 x 2,2	2,25 x 2,2	2,3 x 2,2		
Seating								
Theatre	80	60	60	160	140	330	32	50
Parliament	60	46	46	140	110	210	24	44
U-Form	34	30	30	50	50	90	20	30
Block	30	28	28	58	48	86	22	28
Banquet	48	48	48	96	96	250	24	48
Car Pre.	yes	yes	yes	yes	yes	yes	no	no

Room name	Stuttgart	Bad Steben	Ratingen	Bad Salzdetfurth
Location	1 st floor	1 st floor	1 st floor	1 st floor
L x W [m]	6,0 x 7,3	6,5 x 3,45	6,5 x 7,2	7,4 x 3,45
Size [m ²]	43,6	22,5	47,2	25,6
Height [m]	2,7	2,7	2,65	2,7
Doors [m]	1,85 x 2,05	0,80 x 2,05	1,85 x 2,05	0,95 x 2,05
Seating				
Theatre	20	12	20	12
Parliament	16	/	20	/
U-Form	12	/	14	/
Block	12	12	12	12
Banquet	16	/	16	/
Car Pre.	no	no	no	no

Room name	Penthouse 1	Penthouse 2	Penthouse 3	Penthouse 4	Penthouse 5	Hamburg
Location	Penthouse	Penthouse	Penthouse	Penthouse	Penthouse	Penthouse
L x W [m]	7,4 x 7,15	7,4 x 7,15	7,15 x 3,65	7,15 x 3,65	7,15 x 3,65	10,75 x 6,75
Size [m ²]	53,0	53,0	26,10	26,10	26,10	72,5
Height [m]	2,7	2,7	2,7	2,7	2,7	2,7
Doors [m]	1,00 x 2,05	1,00 x 2,05	1,00 x 2,05	1,00 x 2,05	1,00 x 2,05	0,95 x 2,10
Seating						
Theatre	30	30	12	12	12	36
Parliament	20	20	/	/	/	26
U-Form	16	16	/	/	/	20
Block	16	16	12	12	12	18
Banquet	24	24	/	/	/	24
Car Pre.	no	no	no	no	no	no