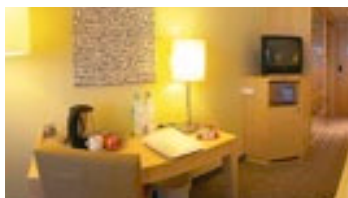




relexa hotel Ratingen City

Calor-Emag-Strasse 7
40878 Ratingen
Telephone +49 (0) 21 02 | 16 75—0
Telefax +49 (0) 21 02 | 16 75—520
Ratingen-City@relexa-hotel.de
www.relexa-hotel-ratingen.de/en



Tranquil city location to ensure comfortable accommodation and successful meetings

The relexa hotel Ratingen City is very near to Duesseldorf, with excellent connections to the airport and right in the middle of the new Ratingen-East Business Park, just a few minutes walk from the historic city centre of Ratingen. This hotel offers the ideal setting for your meetings and events equipped with modern technology. Guests can take also the opportunity to unwind in the relaxing wellness area.

Accommodation

- 134 rooms, incl. 40 with air conditioning, bathtube or shower, W-LAN, radio and mini bar
- Non-smoking and smoking rooms
- 60 underground parking spaces

Dining

- Restaurant »Boulevard« with seating for up to 120 guests
- All day bar
- Outdoor terrace with seating for 80 people

Leisure

- Fitness and wellness area
- Historic town centre of Ratingen

Meetings and events

- Event centre with 6 meeting and event rooms for up to 180 people, fully air conditioned, daylight, state-of-the-art meeting and event technology

**Special event:
cooking with the
executive chef**





Direct routes

Coming from the airport you reach us on the A44 direction »Velbert«. If you are arriving on the A3, take the A44 direction »Moenchengladbach«, take exit Ratingen Ost (34) and turn left at the traffic lights into Homberger Strasse direction Ratingen. After 2.5 km turn right into Wilhelmring and then after about 10m right again into the Calor-Emag-Strasse. You will see the relexa hotel Ratingen City on your right.

Duesseldorf Airport (DUS): 9 km

Main railway station Duesseldorf: 20 km

Railway station Ratingen Ost: 0.8 km

City centre Duesseldorf: 20 km

Trade fair Duesseldorf and Stadium: 15 km

Trade fair Essen: 32 km

Trade fair Cologne: 50 km

Motorways A44 und A3: 3 km

Meeting and event equipment

Standard meeting and event equipment

- Beamer
- Flip chart including paper and pens
- Screen
- Overhead projector, 250 W
- Writing pads and pens
- W-LAN

- Pin board
- Podium
- Text/magnet board
- Fax machine on request
- VHS video camera incl. tripod
- VHS video recorder with remote control

Additional meeting and event equipment

- Sound system with hand and button microphone
- CD player incl. amplifier
- Image/slide projector
- DVD player
- Colour monitor with infrared remote control
- Transparent foil copies
- Copier on request
- LAN
- Photocopies on request
- Laser pointer
- LCD display
- Presentation case
- Plasma screen

Extras

- High voltage current 380 V in rooms Potsdam 1 — 3
- Dance floor

Service (on request)

- Interpreter service
- Secretarial service
- IT technician

www.relexa-hotels.de/en



Hamburg 1



Potsdam

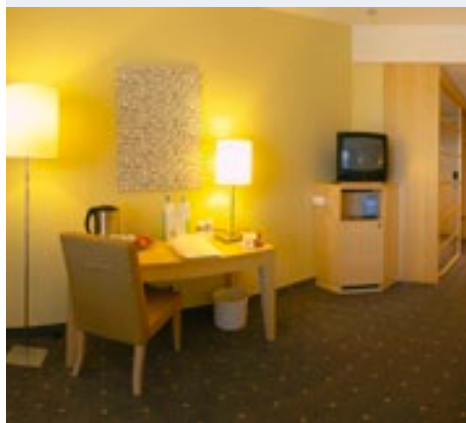
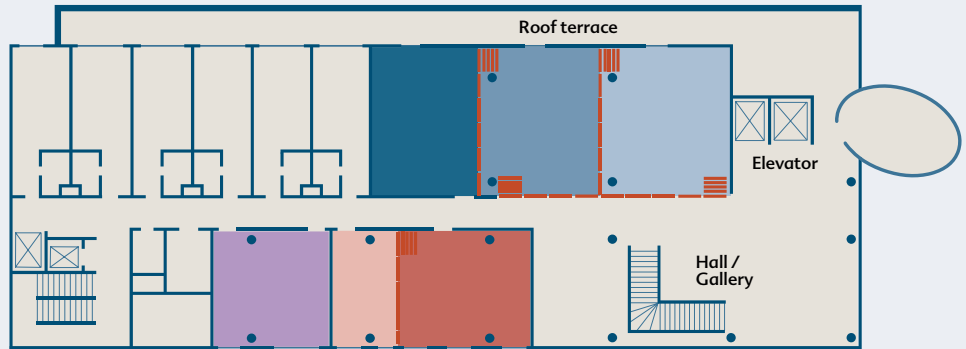


Braunlage

Meeting and event rooms

On the 1st floor

- Potsdam 1
- Potsdam 2
- Potsdam 3
- Braunlage
- Hamburg 1
- Hamburg 2



Room name	Potsdam 1	Potsdam 2	Potsdam 3	Potsdam 1-3	Braunlage	Hamburg 1	Hamburg 2	Hamburg 1+2
Location	1 st floor	1 st floor	1 st floor	1 st floor	1 st floor	1 st floor	1 st floor	1 st floor
L x W [m]	5,7 x 8,1	6,9 x 8,1	7,4 x 8,1	20,0 x 8,1	7,0 x 7,0	7,0 x 7,0	4,5 x 7,0	11,5 x 7,0
Size [m²]	46	56	60	162	49	49	31,5	80,5
Height [m]	3,0	3,0	3,0	3,0	3,0	3,0	3,0	3,0
Doors [m]	1,0 x 2,1	0,8 x 2,1	0,8 x 2,1		1,0 x 2,1	1,0 x 2,1	1,0 x 2,1	
Seating								
Theatre	40	50	50	150	40	40	20	70
Parliament	30	40	40	100	30	30	16	45
U-Form	18	20	20	65	18	18	12	28
Block	22	25	25	70	22	22	14	45
Banquet	/	26	26	130	/	/	/	70
Car Pre.	no	no	no	no	no	no	no	no

Car presentation only in the foyer

