



Meeting and Event à la relexa

9 attractive locations
across Germany

Imprint

Editor relexa hotel Verwaltungs GmbH
Carmerstrasse 6 • 10623 Berlin
telephone +49 30 | 2201167 - 50
fax +49 30 | 2201167- 56
Kontakt@relexa-hotel.de

Managing Director Josef H. Matheus

Text relexa hotel Verwaltungs GmbH

Print JD Druck

As of February 2022

Dear guests,

we have compiled this brochure for you with all information about meeting and events at our relexa hotels. Depending on your needs and your conference guests, you can choose a relexa location with matching benefits. We will be happy to present to you the relexa hotels on the following pages.

First get an overview of the locations, the meeting and event services and all key data of the relexa hotels.

This is followed by a detailed overview of each hotel. Please find more information at the back.

We hope you enjoy this brochure and we are looking forward to welcome you in our relexa hotels — always different, always excellent service.

Welcome to the relexa hotels!





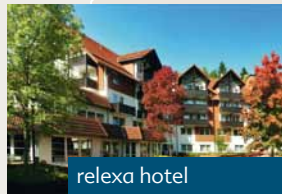
relexa hotel
Bellevue

Hamburg



relexa hotel
Stuttgarter Hof

Berlin



relexa hotel
Harz-Wald

Braunlage



relexa hotel Airport
Düsseldorf-Ratingen

Düsseldorf/Ratingen



relexa hotel
Ratingen City



relexa hotel
Bad Steben

Bad Steben

Frankfurt

relexa hotel
Frankfurt/Main



Stuttgart

relexa Waldhotel
Schatten



Munich



relexa hotel
München

Meeting and Event à la relexa

You will find ten relexa hotels across Germany. Regardless which location you choose, the relexa hotels cater for your needs and offer well equipped meeting and event rooms with modern technology and facilities as well as excellent unique service.

We offer big city flair or meeting in tranquility, close to the airport or close to the city centre, woods just outside: whatever your need – you decide.

Content

Catering à la relexa – the stylish way	page 6
Meeting and Event à la relexa – the stylish way	page 7
All relexa hotels at a glance	page 8
Berlin relexa hotel Stuttgarter Hof	page 10
Dusseldorf-Ratingen relexa hotel Airport Düsseldorf-Ratingen	page 14
Frankfurt/Main relexa hotel Frankfurt/Main	page 18
Hamburg relexa hotel Bellevue	page 22
Ratingen relexa hotel Ratingen City	page 26
Stuttgart relexa Waldhotel Schatten	page 30
Bad Steben relexa hotel Bad Steben	page 34
Braunlage relexa hotel Harz-Wald	page 38
Munich relexa hotel München	page 42
relexa cooking	page 44

Catering à la relexa — the stylish way

The relexa hotels are a privately run hotel chain which offers individuality. On the following pages you will see for yourself how unique each relexa hotel is but still offers the same philosophy: “we do ordinary things exceptionally well”. Our meeting and event concept is also reflected within this philosophy:

reliable planning, professional support and advice, excellent service, tailor made catering and supporting frame work, after meeting activities as well as modern equipment in our meeting rooms.

Our relexa conference packages relexa basic and relexa premium are available in all our hotels. In addition, every relexa hotel offers individual conference packages that highlight the character and strength of every hotel. Each package can be changed according to your needs and wishes. Our professional meeting and event team will be happy to advise you.

The meeting and event packages at a glance: **relexa basic:**

- meeting room
- meeting and event equipment: flipchart incl. paper and pens, projector, screen, whiteboard
- pads and pens for all participants
- Wi-Fi in the meeting room
- unlimited mineral water
- two coffee breaks
- lunch

relexa premium includes additional:

- presentation case
- unlimited apple/orange juice
- soft drinks for lunch
- specialty coffee after dinner
- telephone, photocopies free (agreed limit)



Meeting and Event à la relexa – the stylish way

Reliable and efficient planning

After receiving your request, we will send you within a short time our offer. We will help and assist you when planning your conference.

Meeting rooms with the latest technology

All our meeting rooms in the relexa hotels have daylight and reflect the individual character of the relexa hotel. They are all equipped with modern meeting and event technology.

At the hotel – we are there for you

During your event, please don't hesitate to contact our relexa team, which will offer advice, practical help and ensures a smooth process. Any questions or any other requests? We are always happy to help.

The complete service for your meeting

We will be happy to take care of room decorations, planning for a framework programme, organise any transfer of your guests and conference participants as well as welcome them at the venue. We ensure that your event is a complete success.

Take a break

Daily changing coffee breaks spoil your palate. Furthermore, each relexa hotel offers opportunities for relaxation and sporting activities, even after the meeting has finished.

Dining à la relexa

We offer international dishes and regional delicacies, a snack or a five-course meal. Enjoy our relexa food.

Visit us online

Find the perfect relexa hotel for your meeting and event and visit our homepage:

www.relexa-hotels.de/en/business. All important information and great impressions of the meeting rooms can be found there.

Requests

On the following pages you will find the relexa hotel telephone numbers and e-mail addresses for your inquiry. We look forward to hear from you.



All relexa hotels at a glance

	page	room	meeting rooms	size of largest room	max. capacity of people in the largest room	daylight	number of rooms in the largest room	meeting rooms on ground floor	Wi-Fi in the meeting room	parking possibilities	hotel bar	number of restaurants	bowling alley
relexa hotel Stuttgarter Hof Anhalter Str. 8—9, 10963 Berlin	10	208	11	224	200	✓	7	—	✓	✓	✓	2	—
relexa hotel Airport Düsseldorf-Ratingen Berliner Str. 95—97, 40880 Ratingen	14	169	13	187,5	180	✓	13	3	✓	✓	✓	1	—
relexa hotel Frankfurt/Main Lurgiallee 2, 60439 Frankfurt/Main	18	163	15	310	300	✓	5	3	✓	✓	✓	3	—
relexa hotel Bellevue An der Alster 14, 20099 Hamburg	22	85	7	51	50	✓	2	—	✓	✓	✓	1	—
relexa hotel Ratingen City Calor-Emag-Str. 7, 40878 Ratingen	26	134	6	162	200	✓	—	—	✓	✓	✓	1	—
relexa Waldhotel Schatten Magstadter Str. 2—4, 70569 Stuttgart	30	138	10	148	100	✓	5	—	✓	✓	✓	2	—
relexa hotel Bad Steben Badstr. 26—28, 95138 Bad Steben	38	122	9	308	400	✓	4	—	✓	✓	✓	3	—
relexa hotel Harz-Wald Karl-Röhrig-Str. 5a, 38700 Braunlage	38	120	21	230	250	✓	11	—	✓	✓	✓	1	✓
relexa hotel München Schwanthalerstr. 58—60, 80336 Munich	42	121	—	—	—	—	—	—	—	✓	✓	—	—

	sauna	solarium	fitness room	steam bath	swimming pool	bicycle rental	smoking area in the hotel	facilities for disabled guests	framework programme for activities	telephone	fax	e-mail
	✓	—	✓	✓	—	—	✓	✓	✓	+49 30 264 83-0	- 900	Berlin@relexa-hotel.de
	✓	✓	✓	—	—	✓	—	✓	✓	+49 2102 458-0	- 599	Duesseldorf.Ratingen@relexa-hotel.de
	✓	✓	✓	✓	—	—	✓	✓	✓	+49 69 95 778-0	- 878	Frankfurt.Main@relexa-hotel.de
	—	—	—	—	—	—	—	—	✓	+49 40 28 444-0	- 222	Hamburg@relexa-hotel.de
	✓	✓	✓	—	—	✓	—	—	✓	+49 2102 16 75-0	- 520	Ratingen.City@relexa-hotel.de
	✓	✓	✓	✓	—	✓	—	✓	✓	+49 711 68 67-0	- 999	Stuttgart@relexa-hotel.de
	✓	—	✓	✓	✓	—	—	—	✓	+49 92 88 72-0	- 133	BadSteben@relexa-hotel.de
	✓	✓	✓	✓	✓	✓	✓	✓	✓	+49 5520 807-0	- 444	Braunlage@relexa-hotel.de
	—	—	—	—	—	—	—	✓	✓	+49 89 996 506-0	- 472	Muenchen@relexa-hotel.de



relexa hotel Stuttgarter Hof

Anhalter Strasse 8—9
10963 Berlin
telephone +49 30 | 26483-0
fax +49 30 | 26483-900
Berlin@relexa-hotel.de
www.relexa-hotel-berlin.de/en



Meeting in the heart of Berlin, close to Potsdamer Platz

Our relexa hotel has eleven meeting rooms with daylight and air conditioning for up to 200 people. In summer we have two patios available where we offer outside catering for you. Enjoy a central location with convenient public transport and walking distance to Potsdamer Platz.

Living

- 208 luxury rooms and suites with bath or shower, flat screen TV, radio, mini bar, free tea & coffee making facilities, safe, Wi-Fi
- smoking and non-smoking rooms
- 40 underground parking spaces

Catering

- we have two restaurants “La Fenêtre” and “Boulevard” as well as a hotel bar “Boulevard”
- 2 private rooms for celebrations and meetings for small groups
- weather permitting we offer outside catering on our Mediterranean patios
- relexa cooking — cooking studio

Leisure

- Finnish sauna, steam room, infrared cabin, adventure showers
- fitness and relaxation room, massages

Meeting and Event

- 11 meeting rooms for up to 200 people



relexa cooking — the relexa cooking studio



see page 48

Meeting and Event Equipment

- CD player
- TV/colour monitor with remote control
- transparency foil copies
- photo copies
- ISDN connection
- photo copier on request
- laser pointer
- LCD display
- presentation case
- plasma screen
- lectern
- magnetic board
- facsimile machine on request
- VHS video recorder with remote control

Service (on request)

- translator
- secretary
- IT technician

Extras

- 380 V high voltage available in rooms Berlin 1+2
- dance floor
- high speed internet



How to get to us

You can reach us easily with the S-Bahn (S1, S2 Anhalter Bf.), underground (U2 Potsdamer Platz, U6 Kochstr.) and bus M 29 + M 41.

Within walking distance are the Potsdamer Platz, Brandenburg Tor, Reichstag, Friedrichstrasse and various federal ministries.

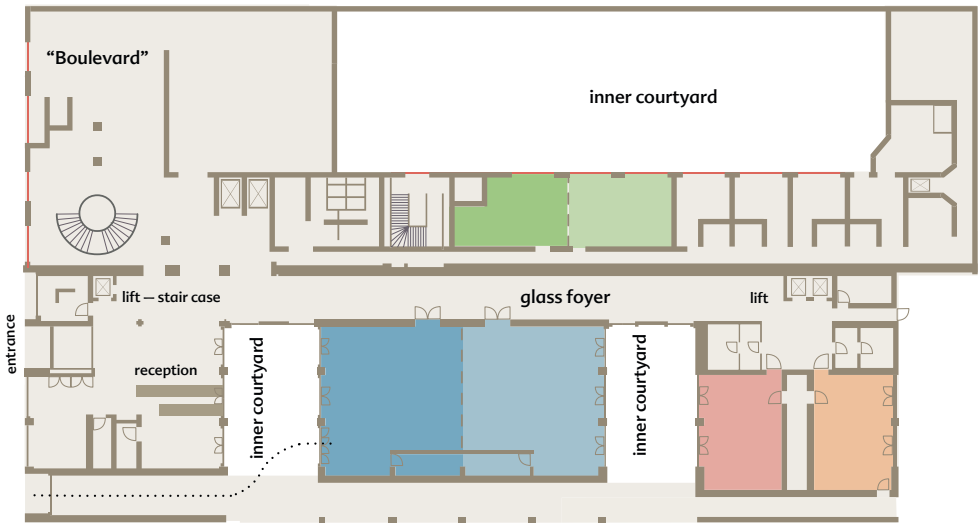
A short taxi ride are Kurfürstendamm, Berlin main train station and Alexanderplatz.

Airport Tegel (TXL): 11 km
 Airport Berlin Brandenburg (BER): 18 km
 Trade Fair Congress: 11 km
 Berlin main train station: 3.2 km

Meeting Rooms

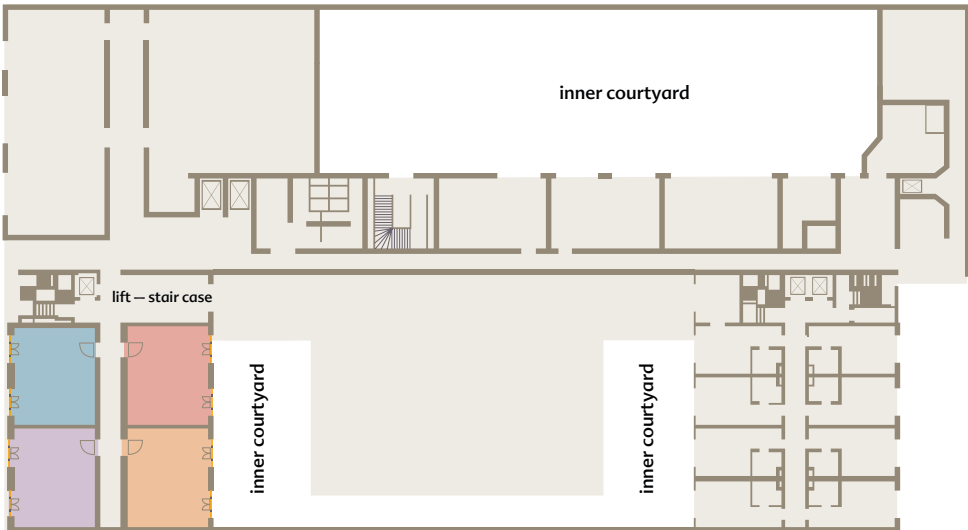
Ground floor

- Berlin 1
- Berlin 2
- Düsseldorf
- Hamburg
- Salon Frankfurt 1
- Salon Frankfurt 2



First floor

- Bad Steben
- Braunlage
- Potsdam
- Stuttgart



Anhalter Str. 7

- Berlin Mitte



Berlin 1+2



Berlin 2

Room name	Berlin 1	Berlin 2	Berlin 1+2	Düsseldorf	Hamburg	Frankfurt 1	Frankfurt 2	Frankfurt 1+2
Location	Ground floor	Ground floor	Ground floor	Ground floor	Ground floor	Ground floor	Ground floor	Ground floor
L/w (m)	11,0 × 10,2	11,0 × 10,2	22,0 × 10,2	8,7 × 6,1	8,7 × 6,1	7,7 × 4,5	8,5 × 4,5	16,3 × 4,5
Size (m²)	112,0	112,0	224,0	53,0	53,0	30,0	40,0	70,0
Height (m)	3,5	3,5	3,5	2,8	2,8	2,8	2,8	2,8
Door size (m)	2,9 × 1,87	2,9 × 1,87	2,9 × 1,87	2,2 × 1,5	2,2 × 1,5	0,91 × 1,92	0,91 × 1,92	0,91 × 1,92
Seating								
Theatre	100	100	200	40	40	20	30	60
Parliament	60	60	140	30	30	10	20	40
U format	30	30	50	20	20	—	—	20
Board room	35	35	55	25	25	10	16	30
Banquet	50	50	120	25	25	—	30	40
Reception	80	80	160	30	30	15	30	50

Room name	Bad Steben	Braunlage	Potsdam	Stuttgart	Berlin Mitte		
Location	First floor	First floor	First floor	First floor		Ground floor	
L/w (m)	7,2 × 6,1	7,2 × 6,1	7,2 × 6,1	7,2 × 6,1		16,0 × 5,4	
Size (m²)	43,0	43,0	43,0	43,0		89,0	
Height (m)	2,4	2,4	2,4	2,4		3,3	
Door size (m)	2,1 × 1,2	2,1 × 1,2	2,1 × 1,2	2,1 × 1,2		2,12 × 1,5	
Seating							
Theatre	30	30	30	30		85	
Parliament	20	20	20	20		40	
U format	15	15	15	15		30	
Board room	20	20	20	20		35	
Banquet	—	—	—	—		50	
Reception	25	25	25	25		80	



Bad Steben



Stuttgart



Düsseldorf



Salon Frankfurt



Berlin Mitte



Hamburg

Dusseldorf-Ratingen



relexa hotel Airport Düsseldorf-Ratingen

Berliner Strasse 95 – 97
40880 Ratingen
telephone +49 2102 | 458-0
fax +49 2102 | 458-599
Duesseldorf.Ratingen@
relexa-hotel.de
www.relexa-hotel-duesseldorf.de/en



Good business at the airport

The relexa hotel Airport Düsseldorf-Ratingen combines functionality and convenience, modern equipment and perfect organization, comprehensive service and professional staff. All this contributes to the success of your event. Its location in the industrial park “Business In-West” right off the motorway and near to the airport as well as the exhibition centre, makes it an ideal place for your business meeting in the Rhineland.

Living

- 169 superior, deluxe rooms and suites with bath or shower, Wi-Fi, mini bar, safe
- smoking and non-smoking rooms
- underground parking facilities

Catering

- restaurant “Brasserie”
- “Boulevard Bar & Cafe”

Leisure

- sauna, steam bath, solarium, fitness room

Meeting and Event

- 13 meeting rooms for up to 180 people, fully air conditioned, daylight, modern meeting and event technology



Meeting and Event Equipment

- presentation case
- sound system with hand and clip microphone
- CD player incl. amplifier
- transparency foil copies
- photo copies
- internet connection
- photo copier on request
- laser pointer
- TV
- lectern
- facsimile machine on request

Service (on request)

- translator
- secretary
- IT technician

Extras

- 380 V high voltage available in rooms Düsseldorf, Frankfurt



How to get to us

From the motorway A52 Dusseldorf/ Essen, exit Ratingen/Kaiserswerth is our hotel only a few hundred meters away. The relexa hotel Airport is conveniently connected with the A44, junction Dusseldorf-Nord, the airport, trade fair and the junction Ratingen-Ost.

The hotel is a fifteen minute taxi ride from the Dusseldorf city centre and from the airport you reach the hotel in 5 minutes by car.

Airport Dusseldorf (DUS): 3 km
 Dusseldorf main train station: 15 km
 Train station airport: 3 km
 City centre: 15 km
 Trade fair Dusseldorf & stadium: 6 km
 Trade fair Essen: 21 km
 Trade fair Cologne: 50 km
 Motorways A52, A44 and A3: 1–4 km

Meeting Rooms

Ground floor

- Berlin 1
- Berlin 2
- Berlin 3
- Frankfurt 1
- Frankfurt 2
- Frankfurt 3
- Stuttgart 1
- Stuttgart 2
- Ratingen
- Düsseldorf 1
- Düsseldorf 2
- Düsseldorf 3
- Hamburg



Berlin 1



Berlin 2



Frankfurt 1+2



Stuttgart 2



Ratingen



Stuttgart 1



Hamburg



Düsseldorf 1-3



Lobby

Room name	Berlin 1	Berlin 2	Berlin 3	Berlin 1–3	Stuttgart 1/2	Stuttgart 1+2	Ratingen
Location	Ground floor	Ground floor	Ground floor	Ground floor	Ground floor	Ground floor	Ground floor
L/w (m)	6,0 x 5,1	11,5 x 7,7	10,5 x 7,8	11,5 x 20,6	6,9 x 6,4	13,8 x 6,4	4,9 x 5,1
Size (m²)	30,0	90,0	67,5	187,5	37,0	74,0	27,0
Height (m)	3,0	3,0	3,0	3,0	3,05	3,05	3,05
Door size (m)	1,01 x 2,13	1,01 x 2,13	1,6 x 2,13	0,75 x 2,05	0,75 x 2,05	0,75 x 2,05	2,0 x 2,0
Seating							
Theatre	20	80	48	110	24	46	—
Parliament	—	40	36	62	14	24	—
U format	12	22	18	36	8	16	—
Board room	14	32	22	40	12	20	12
Banquet	—	48	32	110	—	40	—
Circular	12	24	22	—	12	18	—
Car pres.	n/a	n/a	n/a	n/a	n/a	n/a	n/a

Room name	Frankfurt 1	Frankfurt 2	Frankfurt 3	Frankfurt 1+2	Frankfurt 1–3	Lobby
Location	Ground floor	Ground floor	Ground floor	Ground floor	Ground floor	Ground floor
L/w (m)	6,7 x 5,1	5,9 x 7,9	10,5 x 7,8	13,9 x 5,9	20,8 x 5,9	11,11 x 7,32
Size (m²)	34,0	46,0	67,5	80,0	147,5	81,3
Height (m)	3,0	3,0	3,0	3,0	3,0	3,0
Door size (m)	1,01 x 2,13	2,01 x 2,13	1,6 x 2,13	2,01 x 2,13	2,01 x 2,13	3,29 x 2,13
Seating						
Theatre	24	48	48	80	170	—
Parliament	—	24	36	48	74	—
U format	12	18	18	30	46	—
Board room	16	24	22	36	52	—
Banquet	—	32	32	56	88	—
Circular	12	18	22	30	46	—
Car pres.	available	available	available	available	available	available

Room name	Düsseldorf 1	Düsseldorf 2	Düsseldorf 3	Düsseldorf 1+2	Düsseldorf 1–3	Hamburg
Location	Ground floor	Ground floor	Ground floor	Ground floor	Ground floor	Ground floor
L/w (m)	5,15 x 7,7	7,8 x 7,7	5,15 x 7,7	12,95 x 7,7	18,1 x 7,7	7,55 x 5,65
Size (m²)	41,0	60,0	41,0	101,0	142,0	42,0
Height (m)	2,95	2,95	2,95	2,95	2,95	3,15
Door size (m)	2,0 x 2,0	2,0 x 2,0	2,0 x 2,0	2,0 x 2,0	2,0 x 2,0	0,8 x 2,0
Seating						
Theatre	24	50	24	100	180	30
Parliament	16	32	16	64	88	24
U format	12	18	12	34	38	16
Board room	16	24	16	40	44	20
Banquet	—	—	—	80	104	—
Circular	12	20	12	38	50	16
Car pres.	n/a	n/a	n/a	n/a	n/a	n/a



relexa hotel Frankfurt/Main

Lurgiallee 2
60439 Frankfurt/Main
telephone +49 69 | 95778 - 0
fax +49 69 | 95778 - 878
Frankfurt.Main@relexa-hotel.de
www.relexa-hotel-frankfurt.de/en



The comfortable business hotel in Frankfurt metropolis

Whether you are attending a conference or trade fair, or negotiating with business partners, the relexa hotel Frankfurt/Main will ensure your visit is successful. The relexa hotel Frankfurt/Main offers the perfect combination of accommodation — catering — relaxation.

Living

- 163 single and double rooms in the categories standard, business, studio and suite
- 8 allergy-friendly rooms
- free Wi-Fi throughout the hotel

Catering

- restaurant “Boulevard” with 110 seats
- 100 seats in our restaurant “Bistro” with an outdoor terrace
- à la carte restaurant “La Fenêtre” with 45 seats
- hotel bar “Happy Hour”

Leisure

- spa area with sauna, steam bath, solarium and fitness room

Meeting and Event

- 15 meeting rooms for up to 300 people

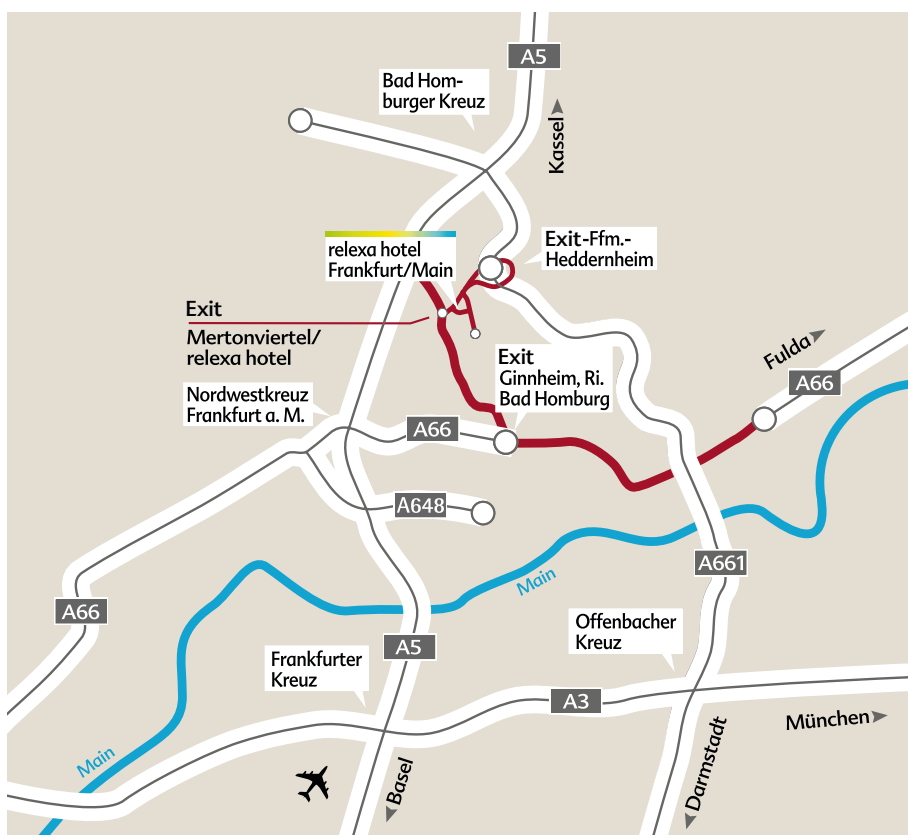


Meeting and Event Equipment

- free Wi-Fi throughout the hotel
- modern sound system with hand and clip microphone
- presentation case
- lectern
- video camera
- TV
- translator cabin
- laser pointer

Service (on request)

- translator
- secretary and business centre
- IT technician



How to get to us

Ideal access via the inter junction: Bad Homburger, Frankfurter and Offenbacher Kreuz on the A5, A3 and exit Mertonviertel of the A661. Reach the city centre with underground lines U1, U2 and U3, all run every 10 minutes.

Outside the hotel are a bus stop and a taxi stand as well as a quick connection road to the city.

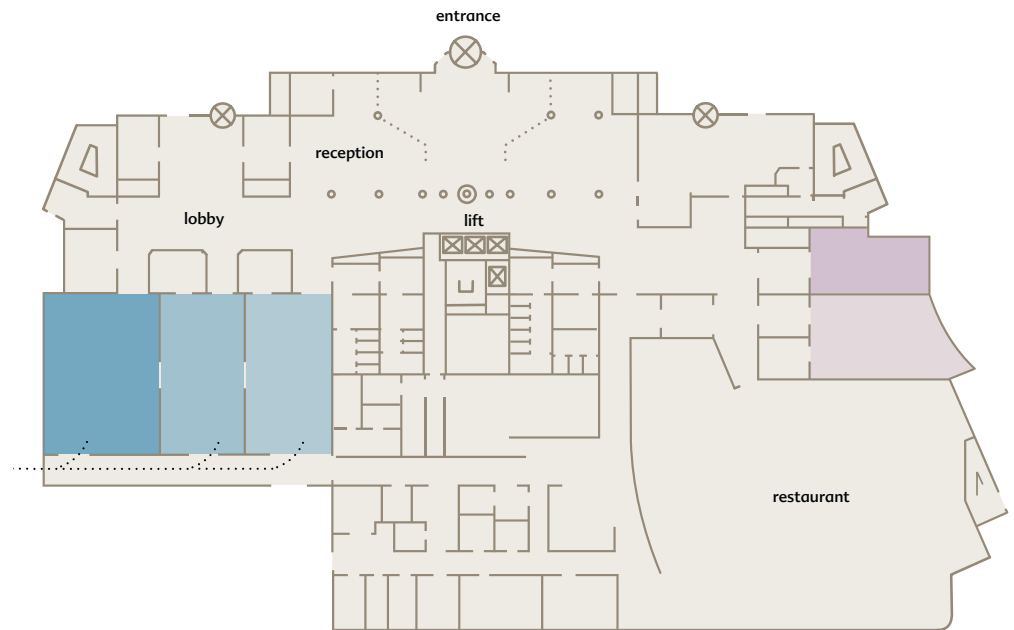
All important central points in and around Frankfurt are only a few minutes away.

Airport Frankfurt/Main (FRA): 24 km
Main train station Frankfurt Main: 9 km
Frankfurt/Main centre: 9 km
Trade fair Frankfurt Main: 8 km
Bad Homburg centre: 8 km
Bad Homburg casino: 9 km
Motorway A66: 6 km, A661: 0.6 km

Meeting Rooms

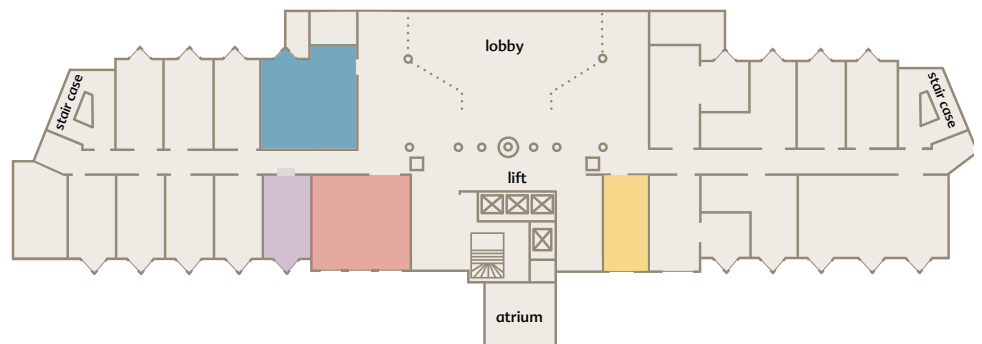
Ground floor

- Berlin 1
- Berlin 2
- Berlin 3
- Frankfurt 1
- Frankfurt 2



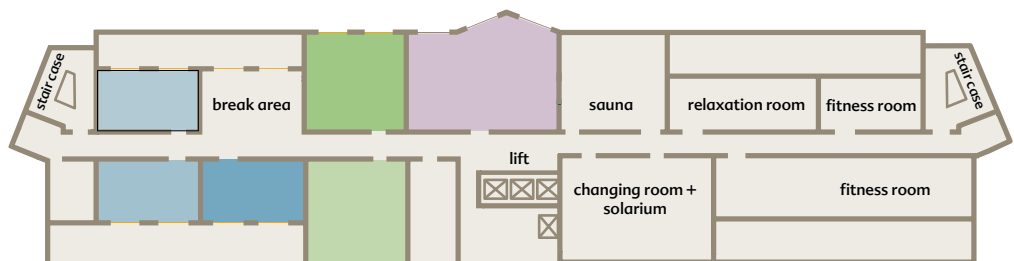
First floor

- Stuttgart
- Bad Steben
- Ratingen
- Bad Salzdetfurth



Seventh floor

- Penthouse 1
- Penthouse 2
- Penthouse 3
- Penthouse 4
- Penthouse 5
- Hamburg



Berlin 1



Stuttgart

Room name	Berlin 1	Berlin 2	Berlin 3	Berlin 1+2	Berlin 2+3	Berlin 1–3	Frankfurt 1	Frankfurt 2
Location	Ground floor	Ground floor	Ground floor	Ground floor	Ground floor	Ground floor	Ground floor	Ground floor
L/w (m)	9,0 × 13,1	7,4 × 13,1	7,3 × 13,1	16,4 × 13,1	14,7 × 13,1	23,7 × 13,1	13,7 × 5,1	13,7 × 6,4
Size (m²)	117,9	96,9	95,6	214,8	192,5	310,5	70,0	87,7
Height (m)	3,25	3,25	3,25	3,25	3,25	3,25	2,9	2,9
Door size (m)	1,85 × 2,2	1,85 × 2,2	1,85 × 2,2	1,85 × 2,2	1,85 × 2,2	1,85 × 2,2	1,90 × 2,1	1,90 × 2,1
	0,85 × 2,2	2,25 × 2,2	2,30 × 2,2	2,25 × 2,2	2,25 × 2,2	2,30 × 2,2		
Seating								
Theatre	80	60	60	160	140	300	32	60
Parliament	55	46	46	120	100	180	24	50
U format	34	30	30	50	50	80	20	30
Board room	30	28	28	58	48	86	22	28
Banquet	48	48	48	96	96	200	24	48
Car pres.	available	available	available	available	available	available	available	available

Room name	Stuttgart	Bad Steben	Ratingen	Bad Salzdetfurth
Location	First floor	First floor	First floor	First floor
L/w (m)	6,0 × 7,3	6,5 × 3,5	6,5 × 7,2	7,4 × 3,5
Size (m²)	43,8	23,0	47,0	26,0
Height (m)	2,7	2,7	2,65	2,7
Door size (m)	1,85 × 2,05	0,80 × 2,05	1,85 × 2,05	0,95 × 2,05
Seating				
Theatre	20	12	20	12
Parliament	16	—	20	—
U format	12	—	14	—
Board room	12	12	12	12
Banquet	16	—	16	—
Car pres.	n/a	n/a	n/a	n/a

Room name	Penthouse 1	Penthouse 2	Penthouse 3	Penthouse 4	Penthouse 5	Hamburg
Location	Seventh floor	Seventh floor	Seventh floor	Seventh floor	Seventh floor	Seventh floor
L/w (m)	7,4 × 7,2	7,4 × 7,2	7,2 × 3,65	7,2 × 3,7	7,15 × 3,65	10,8 × 6,7
Size (m²)	53,0	53,0	26,10	26,6	26,6	72,4
Height (m)	2,7	2,7	2,7	2,7	2,7	2,7
Door size (m)	1,0 × 2,05	1,0 × 2,05	1,0 × 2,05	1,0 × 2,05	1,0 × 2,05	1,0 × 2,05
Seating						
Theatre	30	30	12	12	12	36
Parliament	20	20	—	—	—	26
U format	16	16	—	—	—	20
Board room	16	16	12	12	12	18
Banquet	24	24	—	—	—	24
Car pres.	n/a	n/a	n/a	n/a	n/a	n/a



relexa hotel Bellevue

An der Alster 14
20099 Hamburg
telephone +49 40 | 284 44 - 0
fax +49 40 | 284 44 - 222
Hamburg@relexa-hotel.de
www.relexa-hotel-hamburg.de/en



Maritime hospitality in Hamburg's prime location

We want to ensure that you feel the flair of our cosmopolitan city when visiting the Hanseatic city Hamburg. This we have on offer: close to the city centre, wonderful views and walks around the "Alster" lake and surrounding just outside our hotel. Discover the gateway to the world and be already right in the middle of it.

Living

- 85 luxury rooms and suites with bath or shower, mini bar, Wi-Fi
- non smoking hotel
- 30 parking spaces (15 underground parking)

Catering

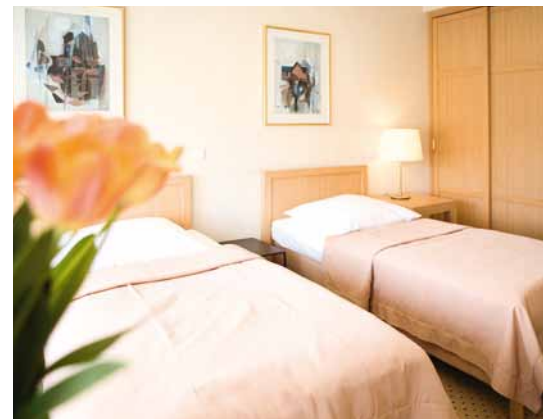
- restaurant "Alster Charme"
- bar/restaurant "Lower Deck"

Leisure

- musical and theatre visits
- Hamburg by day and by night
- Speicherstadt, Deichtorhallen and much more

Meeting and Event

- 7 meeting rooms for up to 50 people



Meeting and Event Equipment

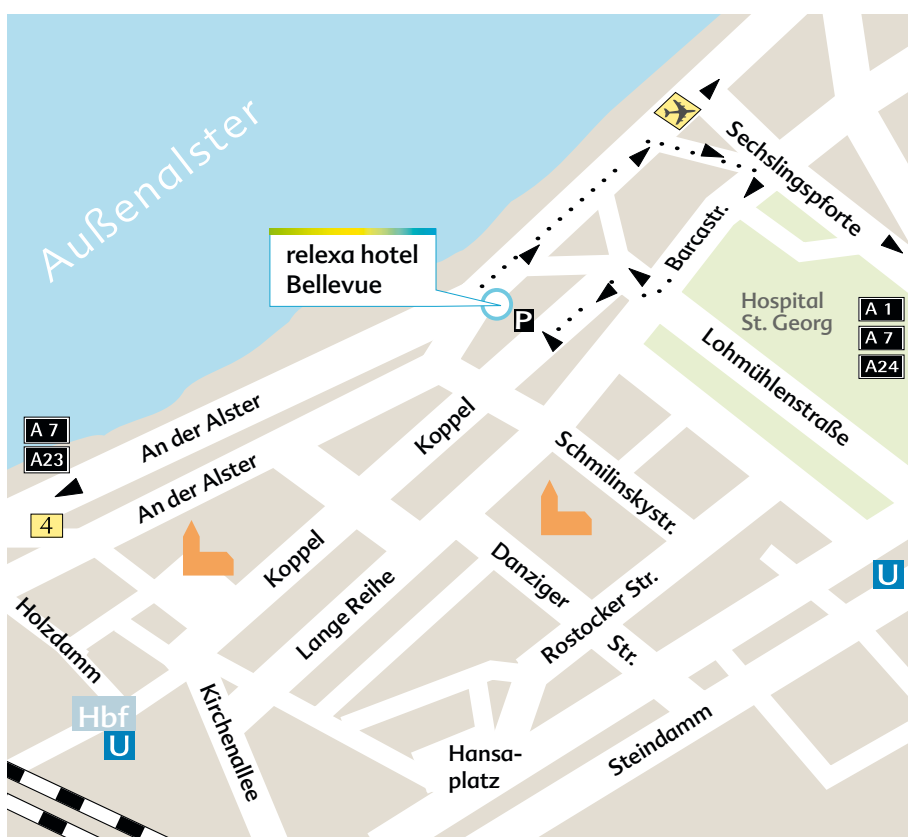
- modern sound system with hand and button microphone
- CD player with amplifier
- colour monitor with infra red remote control
- TV/60 cm colour monitor with remote control
- sound system
- transparency foil copies
- photo copies
- photo copier on request
- laser pointer
- presentation case
- lectern
- magnetic board

Service (on request)

- VHS video camera with tripod

Extras

- dance floor



How to get to us

Easy to reach from the motorways A1, A7, A23 and A24. From the main train station to the hotel is just a few minutes by taxi. Our parking facilities are directly accessible through "Koppel 103" in 20099 Hamburg. From A1, A7 or A24 follow signs to "Sechslingspforte". At the end of "Sechslingspforte" turn sharp left. Immediately turn right into "Barcastrasse". At the first traffic light turn into "Lohmühlenstrasse" and immediately take a left turn into "Koppel". The entrance to the car park and underground parking is about 100 m on the right side.

Airport Hamburg (HAM): 10 km
Hamburg main train station: 0.8 km
City centre: 0.8 km
Volkspark stadium: 10 km
Exhibition centre Hamburg: 2 km
Musicals: 5 – 7 km

Meeting Rooms

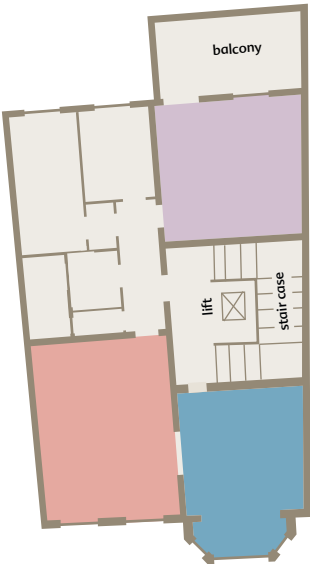
Ground floor

- Blankenese
- St. Georg



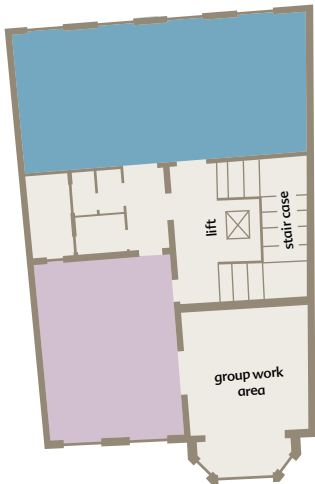
First floor

- Wandsbek
- Eppendorf
- Winterhude



Second floor

- Uhlenhorst
- Eilbek



Room name	Blankenese	St. Georg
Location	Ground floor	Ground floor
L/w (m)	6,4 x 5,0	5,4 x 4,4
Size (m²)	31,8	25,0
Height (m)	3,4	3,2
Door size (m)	0,9 x 2,1	0,9 x 2,1
Seating		
Theatre	20	15
Parliament	13	10
U format	15	12
Board room	15	12
Banquet	16	16
Circular	12	8
Car pres.	n/a	n/a



Blankenese



St. Georg

Room name	Wandsbek	Eppendorf	Winterhude
Location	First floor	First floor	First floor
L/w (m)	5,3 x 4,5	5,1 x 4,9	6,5 x 5,0
Size (m²)	23,9	25,4	32,8
Height (m)	3,2	3,2	3,4
Door size (m)	0,8 x 2,1	0,8 x 2,1	0,8 x 2,1
Seating			
Theatre	8	12	25
Parliament	6	6	13
U format	5	7	15
Board room	6	7	15
Banquet	12	12	16
Circular	8	8	12
Car pres.	n/a	n/a	n/a



Eppendorf



Winterhude

Room name	Uhlenhorst	Eilbek
Location	Second floor	Second floor
L/w (m)	11,4 x 4,5	6,3 x 4,5
Size (m²)	51,2	28,3
Height (m)	3,2	3,2
Door size (m)	0,9 x 2,1	0,9 x 2,1
Seating		
Theatre	50	17
Parliament	30	13
U format	26	13
Board room	26	12
Banquet	30	12
Circular	35	12
Car pres.	n/a	n/a



Uhlenhorst



Eilbek



relexa hotel Ratingen City

Calor-Emag-Strasse 7
40878 Ratingen
telephone +49 2102 | 16 75 - 0
fax +49 2102 | 16 75 - 520
Ratingen.City@relexa-hotel.de
www.relexa-hotel-ratingen.de/en



Comfortable rooms and conference facilities in a tranquil city location

The relexa hotel Ratingen City is located in the immediate vicinity of Düsseldorf and within walking distance of the old town Ratingen. It has very good connection to the airport and is built in the middle of the newly created business park in Ratingen-East. Enjoy a perfect meeting and event ambience with modern technology. The optimal balance provides our attractive wellness centre to our guests.

Living

- 134 rooms of which are 40 air-conditioned rooms, bath or shower, Wi-Fi, mini bar, safe
- smoking and non-smoking rooms
- 60 underground parking spaces

Catering

- restaurant "Boulevard" with 120 seats
- all day bar
- terrace with 50 seats

Leisure

- fitness and wellness area
- near to Ratingen old town, Düsseldorf

Meeting and Event

- conference centre with six rooms for up to 200 people, fully air-conditioned, daylight, modern conference technology



relexa cooking — the relexa cooking studio



see page 48

Meeting and Event Equipment

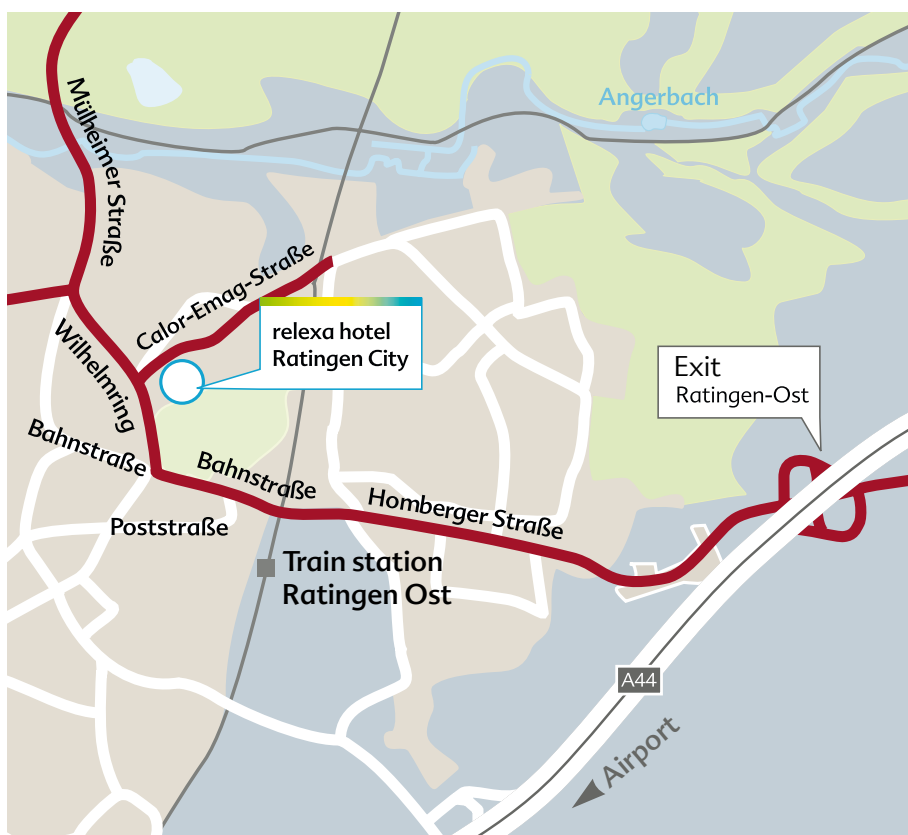
- presentation case
- modern sound system with hand and clip microphone
- CD player with amplifier
- transparency foil copies
- photo copies
- internet connection
- photo copier on request
- laser pointer
- plasma screen
- lectern
- facsimile machine on request

Service (on request)

- translator
- secretary
- IT technician

Extras

- 380 V high voltage available in rooms Potsdam 1–3, Hamburg 1–2, Braunlage



How to get to us

You reach us from the airport via the A44 direction "Velbert".

If you arrive from the A3, drive on the A44 towards Mönchengladbach. Turn off at the exit "Ratingen Ost (34)", and turn at the traffic light left on to "Homberger Strasse" direction Ratingen.

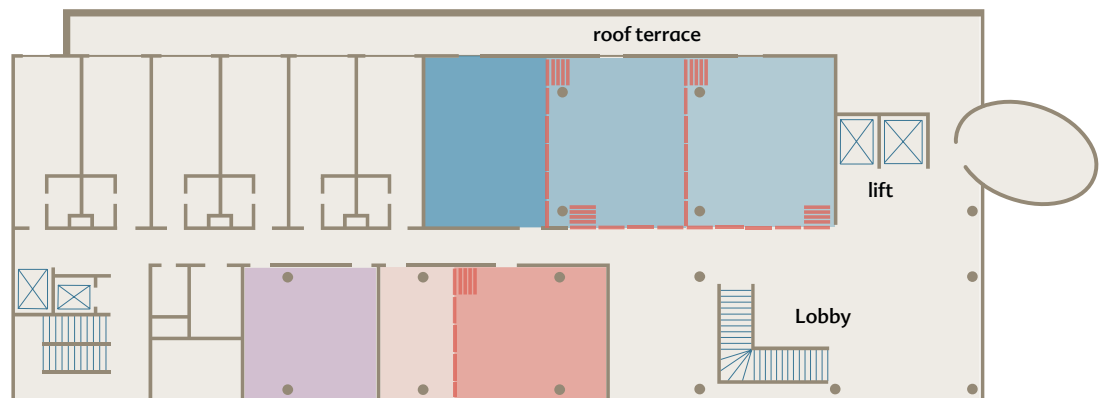
After 2.5 km turn right into the "Wilhelm Ring" and after about 10 m turn right again in the "Calor-Emag-Strasse". The relexa hotel Ratingen City is on the right.

Airport Dusseldorf (DUS): 9 km
 Dusseldorf main train station: 20 km
 Train station Ratingen Ost: 0.8 km
 Dusseldorf city centre: 20 km
 Trade fair Dusseldorf & stadium: 15 km
 Trade fair Essen: 32 km
 Trade fair Cologne: 50 km
 A44 and A3: 3 km

Meeting Rooms

First floor

- Potsdam 1
- Potsdam 2
- Potsdam 3
- Braunlage
- Hamburg 1
- Hamburg 2



Braunlage



Hamburg 1



Potsdam 1



Conference area

Room name	Potsdam 1	Potsdam 2	Potsdam 3	Potsdam 1+2	Potsdam 2+3	Potsdam 1–3
Location	First floor	First floor	First floor	First floor	First floor	First floor
L/w (m)	5,7 × 8,1	6,9 × 8,1	7,4 × 8,1	12,6 × 8,1	14,3 × 8,1	20,0 × 8,1
Size (m²)	46	56	60	102	116	162
Height (m)	3,0	3,0	3,0	3,0	3,0	3,0
Door size (m)	1,0 × 2,1	0,8 × 2,1	0,8 × 2,1			
Seating						
Theatre	30	50	50	80	140	200
Parliament	18	24	24	40	54	80
U format	16	18	16	26	40	50
Board room	20	22	20	32	44	56
Banquet	16	24	32	56	64	120
Circular	16	20	26	30	50	66
Car pres.	n/a	n/a	n/a	n/a	n/a	n/a

Room name	Braunlage	Hamburg 1	Hamburg 2	Hamburg 1+2
Location	First floor	First floor	First floor	First floor
L/w (m)	7,0 × 7,0	7,0 × 7,0	4,5 × 7,0	11,5 × 7,0
Size (m²)	49	49	31,5	80,5
Height (m)	3,0	3,0	3,0	3,0
Door size (m)	1,0 × 2,1	1,0 × 2,1	1,0 × 2,1	
Seating				
Theatre	30	30	16	60
Parliament	12	12	6	36
U format	14	14	8	26
Board room	20	20	12	30
Banquet	16	16	—	40
Circular	16	16	10	30
Car pres.	n/a	n/a	n/a	n/a



Break area



Lobby



relexa Waldhotel Schatten

Magstadter Strasse 2 — 4
70569 Stuttgart
telephone +49 711 | 68 67-0
fax +49 711 | 68 67-999
Stuttgart@relexa-hotel.de
www.relexa-hotel-stuttgart.de/en



Central accommodation and meeting facilities and yet in the countryside

The hotel offers an ideal central location, with great motorway connection but still situated in a tranquil setting. The modern fitness and sauna area and the forest right outside the hotel ensure versatile leisure opportunities after your meeting has finished. And on top of all the relexa cooking offers great team building for your participants.

Living

- 138 comfortable rooms and suites with bath or shower, radio, Wi-Fi, mini bar
- 113 non-smoking and 25 smoking rooms
- 112 parking spaces for a fee, 34 underground parking spaces

Catering

- fire place restaurant “Kaminzimmer”
- hotel bar “Solitude”, summer terrace

Leisure

- Finnish sauna, soft sauna, steam bath, relaxation area
- fitness room, jogging trails around Bärensee (bear lake)

Meeting and Event

- 10 meeting rooms for up to 100 people



our special event —
relexa cooking with the
kitchen team



see page 48

Meeting and Event Equipment

- CD player with amplifier
- TV with remote control and 72 cm monitor
- laser pointer
- presentation case
- plasma screen
- magnetic board
- telephone
- DVD player
- laptop loud speaker
- lectern
- photo copies
- ISDN connection

Service (on request)

- video camera
- sound system
- IT technician

Extras

- 380 V high voltage available in Salons 1—3



How to get to us

From Munich/Singen: from the motorway A8/A81, turn at the junction Stuttgart on to the A831/B14 direction Stuttgart. B14 until exit Magstadt (roundabout), direction Magstadt/Büsnau. Follow the road to the roundabout, turn left to the hotel.

Coming from Karlsruhe/Heilbronn: from motorway A8/A81. Exit Leonberg-Ost, at the traffic light turn right towards Stuttgart. Follow the road until a roundabout, right exit to the hotel.

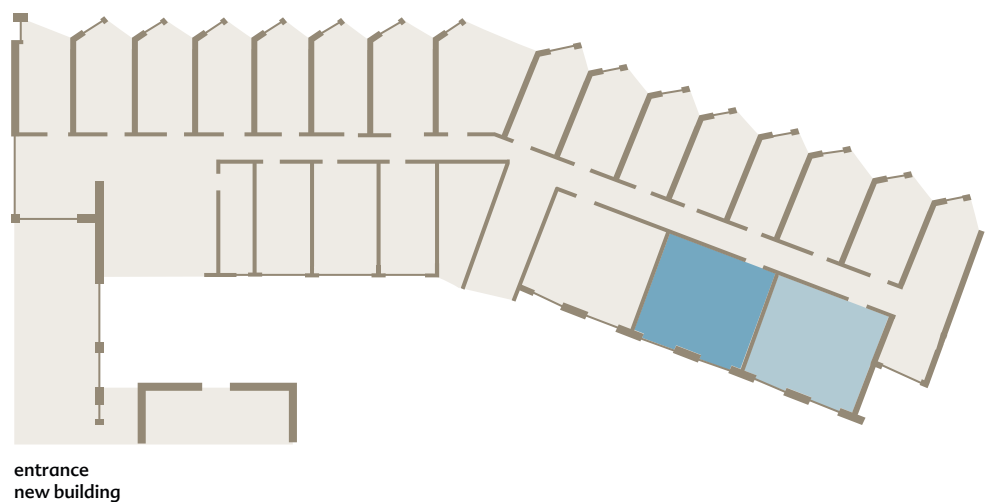
When arriving by train/by airplane, we recommend taking a taxi from the main train station.

Airport Stuttgart (STR): 18 km
 Stuttgart main train station: 10 km
 S-Bahn: 4 km
 City centre: 10 km
 Trade fair Stuttgart: 18 km
 Stadium: 13 km
 A8, A81: 1—4 km

Meeting Rooms

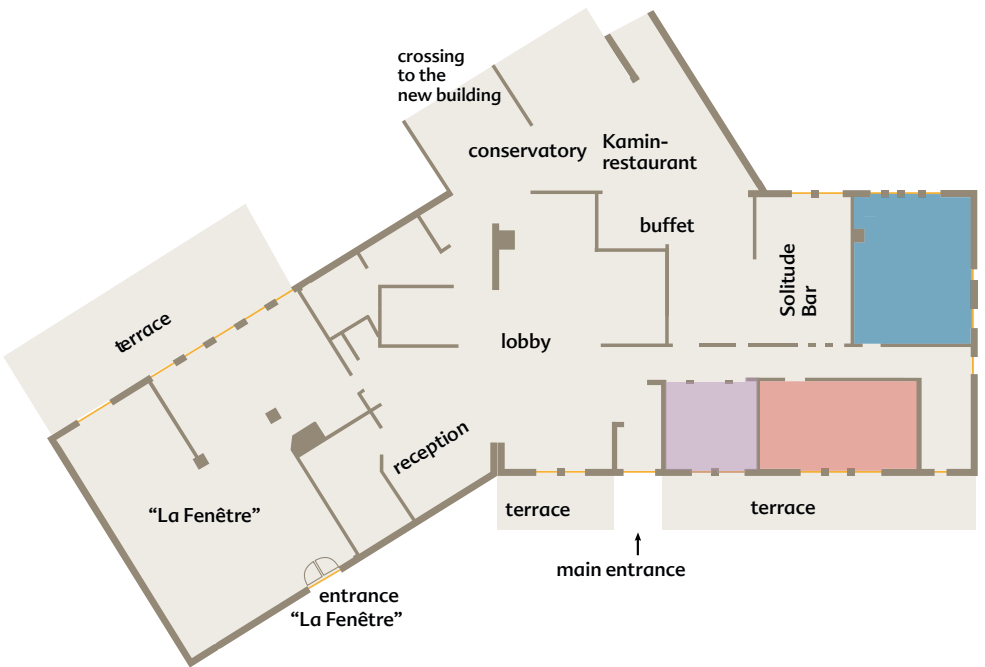
New building ground floor

- Solitude 1
- Solitude 2



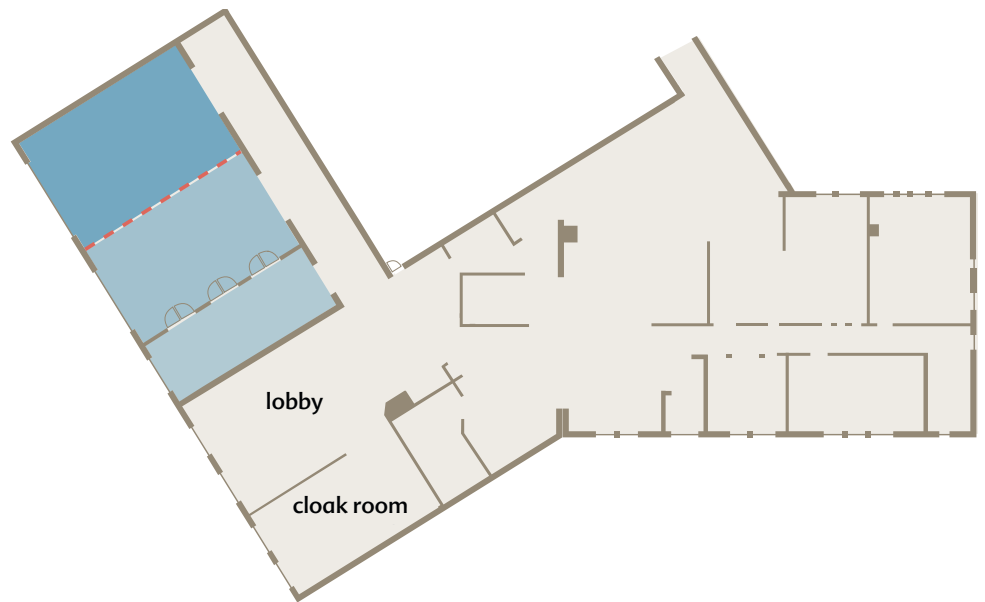
Upper level

- Schattenstube
- Bauernstube
- Postkutsche



Lower level

- Salon 1
- Salon 2
- Salon 3



Room name	Solitude 1	Solitude 2
Location	New building GF	New building GF
L/w (m)	7,25 x 5,5	7,25 x 5,5
Size (m²)	40,0	40,0
Height (m)	2,45	2,45
Door size (m)	1,0 x 2,0	1,0 x 2,0
Seating		
Theatre	24	24
Parliament	18	18
U format	15	15
Board room	12	12
Circular	10	10
Car pres.	n/a	n/a



Solitude 2



Schattenstube



Bauernstube



Hochsitz B

Room name	Schattenstube	Bauernstube	Postkutsche
Location	Upper level	Upper level	Upper level
L/w (m)	6,5 x 5,0	4,0 x 4,5	7,5 x 4,0
Size (m²)	33,0	18,0	30,0
Height (m)	2,65	2,65	2,65
Door size (m)	0,78 x 1,91	1,08 x 2,28	0,78 x 1,91
Seating			
Theatre	16	—	10
Parliament	10	—	—
U format	8	—	—
Board room	14	10	18
Banquet	—	10	—
Circular	8	6	10
Car pres.	n/a	n/a	n/a

Room name	Hochsitz A	Hochsitz B
Location	First floor	First floor
L/w (m)	12,5 x 4,5	7,0 x 3,5
Size (m²)	56,25	24,5
Height (m)	1,98	1,98
Door size (m)	0,94 x 1,97	0,81 x 1,98
Seating		
Theatre	30	12
Parliament	—	—
U format	—	—
Board room	18	10
Banquet	—	—
Circular	10	8
Car pres.	n/a	n/a

Room name	Salon 1	Salon 2	Salon 3	Salons 1+2
Location	Lower level	Lower level	Lower level	Lower level
L/w (m)	8,5 x 9,5	7,0 x 9,5	3,5 x 9,5	15,5 x 9,5
Size (m²)	81,0	67,0	34,0	148,0
Height (m)	2,55	2,55	2,52	2,55
Door size (m)	2,02 x 2,03	2,02 x 2,03	0,93 x 2,03	2,02 x 2,03
Seating				
Theatre	60	50	30	100
Parliament	50	40	—	80
U format	30	20	—	50
Board room	30	24	15	40
Banquet	50	40	20	100
Circular	25	15	—	40
Car pres.	n/a	n/a	n/a	n/a



Salon 1



Salon 3



relexa hotel Bad Steben

Badstrasse 26 – 28
95138 Bad Steben
telephone +49 92 88 | 72 - 0
fax +49 92 88 | 72 - 113
BadSteben@relexa-hotel.de
www.relexa-hotel-bad-steben.de/en



Meeting and events with heart in the Nature Park Franconia Forest ...

Are you planning to combine your meeting or event with wellness, challenging activities and charming surroundings? Thanks to the fast connection to the A9 and A72 as well as its proximity to the city "Hof", the relexa hotel Bad Steben is proving to be the optimal venue. Our hotel provides the perfect setting for all kinds of celebrations as well as for conference and business meetings in the middle of the idyllic Franconia Forest and in the border triangle of Bavaria, Thuringia and Saxony. After your event enjoy the spacious pool and sauna area to relax and unwind.

Living

- 122 luxury bedrooms and suites
- free parking facilities

Catering

- restaurant "La Fenêtre"
- conservatory, terrace café, bar
- casino restaurant "relexa's Rouge et Noir"

Leisure

- wellness facilities on over 1,200 sqm: indoor pool, saunas, aroma steam bath, shower grotto, sauna courtyard, relaxing zones
- tea station and coffee available from 7am by the pool
- fitness room, ergo meter room

Meeting and Event

- 9 meeting rooms for up to 400 people



Meeting and Event Equipment

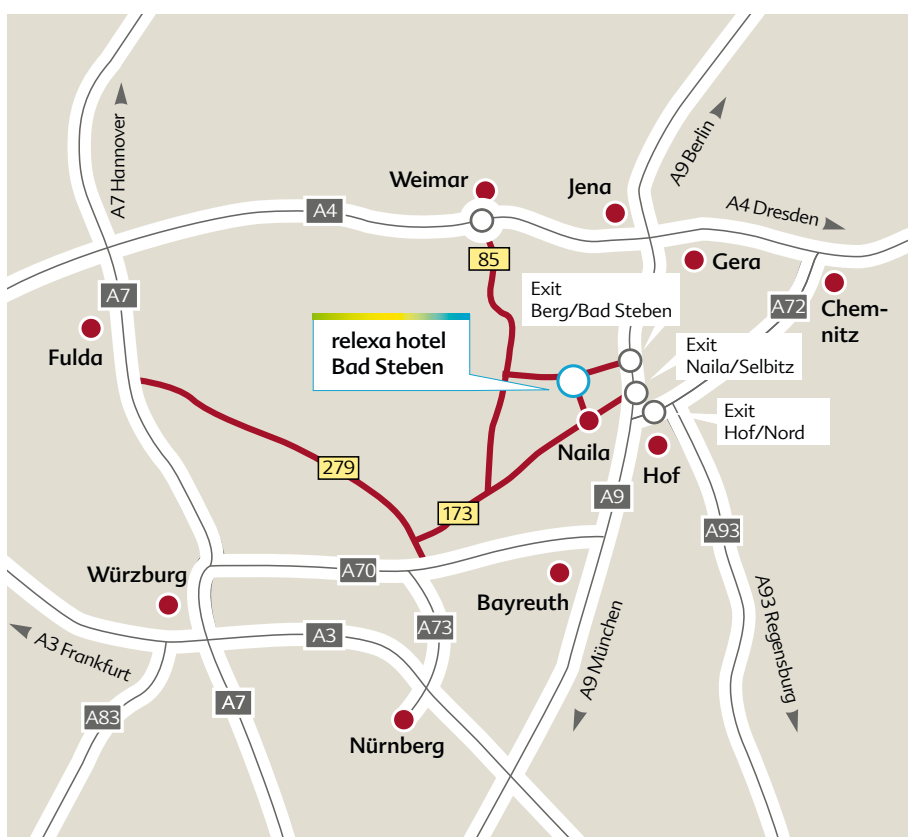
- sound system with hand and clip microphone
- colour monitor with remote control
- photo copies/transparent foil copies
- internet connection
- laser pointer
- mobile dance floor
- lectern
- CD player
- TV connection
- VHS video camera with remote control
- video camera incl. tripod

Meeting and event equipment in the Kurhaus

- sound system with microphone
- stage/dance floor
- music system

Service (on request)

- translator
- secretary
- IT technician



How to get to us

You can reach Bad Steben by car via the A9 Nuremberg-Berlin.

Take exit Naila/Selbitz/Bad Steben and follow the signs 13 km to the hotel.

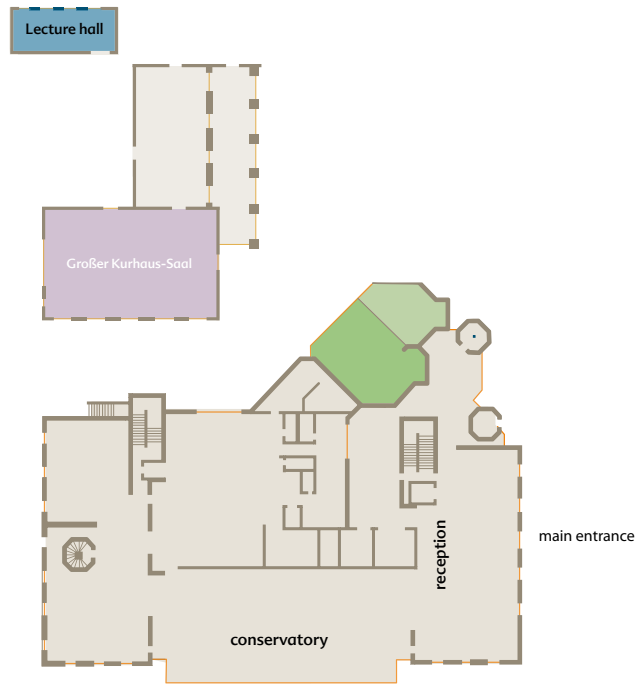
From the main train station "Hof" run trains several times daily to Bad Steben. We offer a free pick-up service to our hotel guests from Bad Steben train station.

Main train station Hof: 25 km
Train station Bad Steben: 0.8 km
Casino Bad Steben: 1 km
A9 motorway: 13 km
Bayreuth: 50 km
Nuremberg and Leipzig each: 150 km

Meeting Rooms

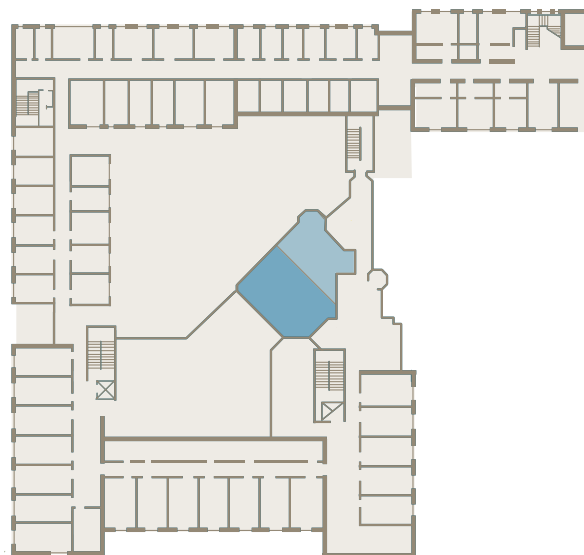
Kurhaus

- Lecture hall
- Großer Kurhaus-Saal



Ground floor

- Düsseldorf 1
- Düsseldorf 2

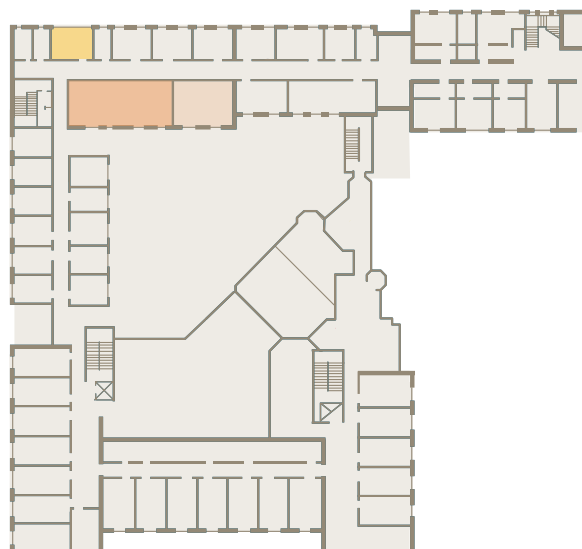


First floor

- Bad Salzdetfurth 1
- Bad Salzdetfurth 2

Second floor

- Berlin 1
- Berlin 2
- Frankfurt



Room name	Lecture hall	Großer Kurhaus-Saal
Location	Kurhaus GF	Kurhaus GF
L/w (m)	12,5 x 7,0	22,0 x 14,0
Size (m²)	88,0	308,0
Height (m)	4,0	9,78
Door size (m)	2,15 x 1,65	2,67 x 1,58
Seating		
Theatre	90	400
Parliament	60	200
U format	30	80
Board room	40	90
Banquet	—	—
Car pres.	n/a	n/a

Room name	Düsseldorf 1	Düsseldorf 2	Düsseldorf 1+2
Location	Ground floor	Ground floor	Ground floor
L/w (m)	7,0 x 9,3	5,0 x 5,0	12,0 x 9,3 (5)
Size (m²)	65,0	25,0	90,0
Height (m)	2,95	2,95	2,95
Door size (m)	2,43 x 1,4	2,43 x 1,4	2,43 x 1,4
Seating			
Theatre	60	20	80
Parliament	25	15	50
U format	20	10	30
Board room	20	10	35
Banquet	45	18	70
Car pres.	n/a	n/a	n/a

Room name	Bad Salzdetfurth 1	Bad Salzdetfurth 2	Bad Salzdetfurth 1+2
Location	First floor	First floor	First floor
L/w (m)	7,0 x 9,3	5,0 x 5,0	12,0 x 9,3 (5)
Size (m²)	65,0	25,0	90,0
Height (m)	2,95	2,95	2,95
Door size (m)	2,43 x 1,4	2,43 x 1,4	2,43 x 1,4
Seating			
Theatre	60	20	80
Parliament	25	15	50
U format	20	10	30
Board room	20	10	35
Banquet	45	18	70
Car pres.	n/a	n/a	n/a



Großer Kurhaus-Saal



Düsseldorf 1+2

Room name	Berlin 1	Berlin 2	Frankfurt
Location	Second floor	Second floor	Second floor
L/w (m)	13,3 x 5,7	7,9 x 5,7	7,75 x 4,0
Size (m²)	73,0	45,0	31,0
Height (m)	2,8	2,8	2,8
Door size (m)	2,05 x 0,8	2,05 x 0,8	2,05 x 0,8
Seating			
Theatre	65	35	25
Parliament	25	20	—
U format	30	15	—
Board room	20	15	15
Banquet	—	—	—
Car pres.	n/a	n/a	n/a

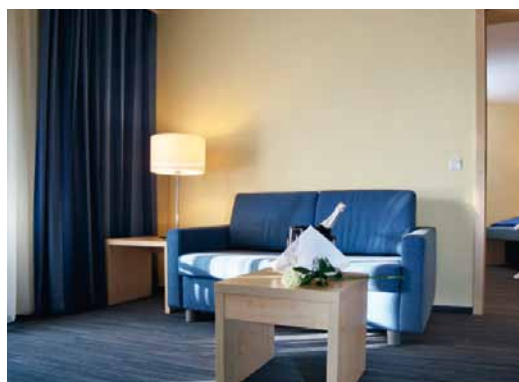


Berlin 1



relexa hotel Harz-Wald

Karl-Röhrig-Strasse 5a
38700 Braunlage
telephone +49 5520 | 807 - 0
fax +49 5520 | 807 - 444
Braunlage@relexa-hotel.de
www.relexa-hotel-braunlage.de/en



Meeting and event, activities and relaxation in the centre of Germany

This charming leisure, family and business hotel in the heart of the Harz enjoys an idyllic location in Braunlage — right at the foot of mount Wurmberg. Whether for business, meeting and events or simply relaxation to unwind or recharge your batteries: here wishes will come true. Combine the pleasant with the necessities, hold your meeting where you can have relaxation too — and the stress is gone.

Living

- 120 cozy rooms with balcony, shower/toilet, hairdryer, telephone, TV and Wi-Fi, non smoking rooms, 3 rooms for disabled guests
- smoking lounge
- access free movement within the entire hotel
- parking facilities (underground garage and outdoor parking)

Catering

- restaurant “Boulevard”
- fireplace room, lobby bar, terrace

Leisure

- 2 saunas, steam bath, swimming pool, relaxation room, sunbathing lawn
- solarium, fitness room, bowling alley
- physiotherapy and beauty area

Meeting and Event

- 21 meeting and event rooms with daylight and views of the countryside for up to 250 people, large stage available



Meeting and Event Equipment

- sound system with hand and button microphone
- radio controlled microphone (lavalier, headset or hand-held microphone)
- photo copies/transparent foil copies
- photo copier
- laser pointer
- presentation case
- lectern
- telephone/fax connection
- laptop
- camera

Service (on request)

- translator
- secretary
- IT technician

Extras

- 380 V high voltage available in rooms Berlin 1+2, Braunlage 1
- in room Berlin 1 — fixed stage with changing room
- mobile dance floor

Please don't hesitate to contact us for additional information such as: monster scooters, cable car, MTB bike park, adventure golf park, torchlight hike and much more.



How to get to us

From the A7 North, take the exit Seesen, direction Osterode. From the South take exit Göttingen-Nord direction Braunlage, exit Mitte. Coming from Berlin take the A2 to Brunswick, then on the A395 to Bad Harzburg, follow the B4 towards Braunlage. Coming from Brunswick you could also take the motorway A395 to Bad Harzburg. Choose Braunlage Nord to exit. Coming into town, turn left into the first road.

If you are coming by train, go to Bad Harzburg.

Airport Hanover (HAJ): 140 km
Main train station Bad Harzburg: 20 km
Bus station Braunlage: 1.5 km
City centre: 0.8 km
Hanover trade fair: 120 km
A7: 60 km, A395: 20 km
A38: 40 km

Meeting Rooms

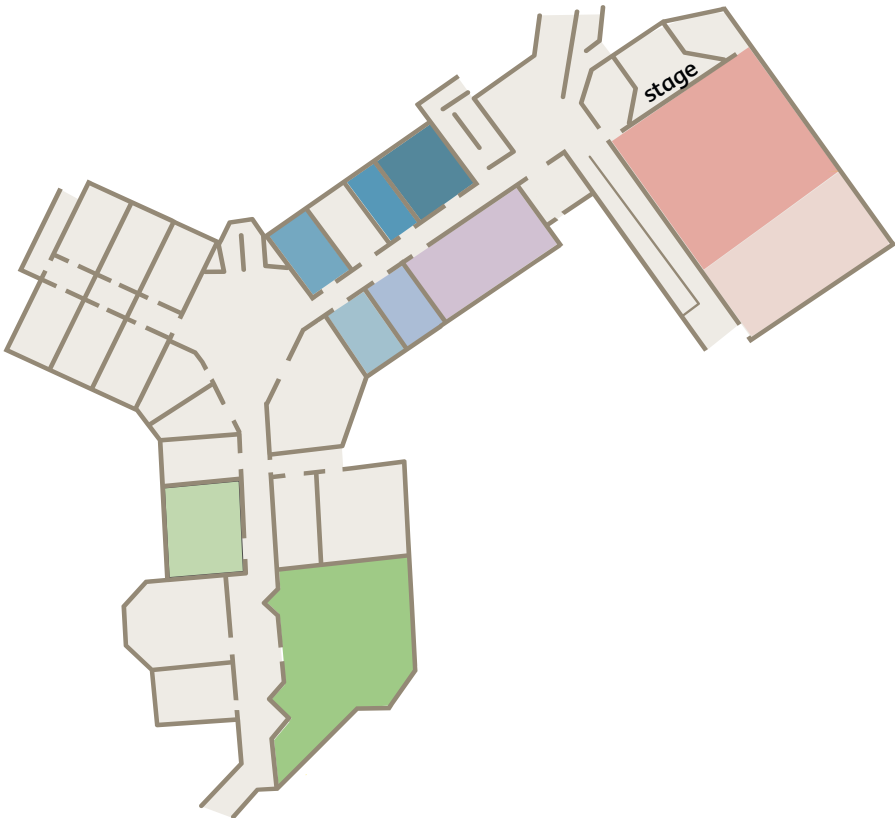
Ground floor

- Düsseldorf 1
- Düsseldorf 2
- Düsseldorf 3
- Düsseldorf 4
- Düsseldorf 5
- Düsseldorf 6
- Salon A
- Salon B
- Bad Steben 1
- Bad Steben 2
- Bad Salzdetfurth



Lower ground

- Stuttgart 1
- Stuttgart 2
- Stuttgart 3
- Stuttgart 4
- Stuttgart 5
- Frankfurt
- Berlin 1
- Berlin 2
- Braunlage 1
- Braunlage 2



Room name	Düsseldorf 1–6	Salon A	Salon B	Bad Steben 1	Bad Steben 2	Bad Salzdetfurth
Location	Ground floor	Ground floor	Ground floor	Ground floor	Ground floor	Ground floor
L/w (m)	5,6 x 3,65	7,45 x 6,5	5,6 x 3,65	5,4 x 5,1	5,6 x 3,6	7,6 x 5,6
Size (m²)	20,4	48,4	20,4	27,5	20,1	42,5
Height (m)	2,6	2,5	2,6	2,6	2,6	2,4
Door size (m)	1,05 x 2,05	1,05 x 2,05	1,05 x 2,05	1,05 x 2,05	1,05 x 2,05	1,05 x 2,05
Seating						
Theatre	—	30	—	15	—	20
Parliament	—	20	—	12	—	20
U format	—	14	—	12	—	12
Board room	10	16	10	12	10	16
Banquet	—	—	—	—	—	—
Car pres.	n/a	n/a	n/a	n/a	n/a	n/a

Room name	Stuttgart 1	Stuttgart 2–5	Frankfurt	Berlin 1	Berlin 2	Berlin 1+2
Location	Lower ground	Lower ground	Lower ground	Lower ground	Lower ground	Lower ground
L/w (m)	6,0 x 5,15	6,0 x 3,65	6,0 x 11,0	12,55 x 11,3	7,85 x 11,3	20,5 x 11,3
Size (m²)	31,0	22,0	66,0	141,8	88,7	231,6
Height (m)	2,5	2,5	2,5	3,0	3,0	3,0
Door size (m)	1,05 x 2,05	1,05 x 2,05	1,05 x 2,05	2,44 x 2,22	2,44 x 2,22	2,44 x 2,22
Seating						
Theatre	—	—	50	150	100	280
Parliament	—	—	40	100	70	200
U format	—	—	25	40	30	80
Board room	10	10	20	—	25	—
Banquet	—	—	20	80	40	200
Car pres.	n/a	n/a	n/a	n/a	n/a	n/a

Room name	Braunlage 1	Braunlage 2
Location	Lower ground	Lower ground
L/w (m)	13,4 x 9,8	5,65 x 7,4
Size (m²)	131,3	42,0
Height (m)	2,45	2,45
Door size (m)	2,22 x 2,15	1,05 x 2,05
Seating		
Theatre	70	30
Parliament	50	20
U format	40	16
Board room	30	20
Banquet	50	—
Car pres.	n/a	n/a



Bad Salzdetfurth



Frankfurt



Berlin 1+2



Braunlage 1



relexa hotel München

Schwanthalerstrasse 58 – 60
80336 Munich
telephone +49 89 | 996 506-0
fax +49 89 | 996 506-472
Muenchen@relexa-hotel.de
www.relexa-hotel-muenchen.de/en



The Munich city hotel for business or leisure

This stylish 4-star relexa hotel München is located directly at Munich main train station in the city centre of the lively St. Paul area, near the underground station. You can reach the large and elegant shopping streets of downtown Munich in a few minutes. Close to the relexa hotel is the famous Theresienwiese with the annual Oktober festival. Stay right in the middle of the Bavarian capital at the relexa hotel Munich and reach easily the trade fair Munich.

Living

- 121 elegant and contemporary rooms and studios with soundproof windows, air conditioning, flat screen TV, Wi-Fi, radio, mini bar, room safe
- mineral water for refreshment
- bathroom with cosmetic mirror, individual toiletries, fluffy Bathrobe on request

Hotel bar

- charming hotel bar with small snacks and drinks as well as a fresh Bavarian draft beer

Leisure

- attractive leisure offers from partner companies at special conditions



Business

If you plan your next business meeting or training and would like to stay in a central location? If you want to enjoy evening activities in a metropolitan city? Then the relexa hotel Munich is just the right place to stay.



How to get to us

Arriving by car via motorway: A9 Nuremberg-Munich, A8 Salzburg-Munich or A8 Stuttgart-Munich. Always follow the signs Stadtmitt (city centre). By train: Munich main train station and take the exit South, Bayerstrasse. You can reach our hotel easily in minutes on foot.

Arriving by plane: take at Franz Josef Strauss Airport the S-Bahn S8 and go directly to the main train station. A taxi from the airport to the hotel will cost you approximately EUR 75.00.

Munich main train station: 0.5 km
Airport Munich (MUC): 38 km
Trade fair Munich: 12 km
October festival: 0.75 km



The special event

relexa cooking

simply delicious!

relexa hotels

Die feine Art



Welcome to the relexa cooking studios

This is your chance to cook with friends, family or colleagues under professional guidance. Our chefs make almost anything possible for you and your team — baking cookies with customers as well as show cooking in front of your desired audience.

relexa cooking — where do we cook?

In Berlin there is a separate, ultra-modern cooking studio with a large table for up to 20 people. In Ratingen and Stuttgart you may cook in the large main kitchen and dine afterwards in the elegant hotel restaurant.

relexa cooking — the process

We start with an introduction to the professional team, then discuss the menu and product knowledge. After that you put on your apron and start the cooking fun. The grand finale is just as enjoyable as the cooking — try out the cooked menu and the drinks, which are recommended by our team.

relexa cooking — plan and book

One call is enough! Let us know your wishes, ideas, plans and schedule and we will be happy to give you an individual offer.



Enjoy cooking
with us. relexa
cooking studio.

You can find relexa cooking in these fine hotels:

relexa cooking Berlin

Anhalter Strasse 7
10963 Berlin
telephone +49 30 | 264 83 - 0
fax +49 30 | 264 83 - 900
Berlin@relexa-hotel.de

relexa cooking Ratingen City

Calor-Emag-Strasse 7
40878 Ratingen
telephone +49 2102 | 16 75 - 0
fax +49 2102 | 16 75 - 520
Ratingen.City@relexa-hotel.de

relexa cooking Waldhotel Schatten

Magstadter Strasse 2 — 4
70569 Stuttgart
telephone +49 711 | 68 67 - 0
fax +49 711 | 68 67 - 999
Stuttgart@relexa-hotel.de

Find all information on “relexa cooking” on www.relexa-hotels.de/en.

relexa hotel Verwaltungs GmbH
Carmerstrasse 6
10623 Berlin
telephone +49 30 | 2201167-50
fax +49 30 | 2201167-56
Kontakt@relexa-hotel.de

www.relexa-hotels.de/en